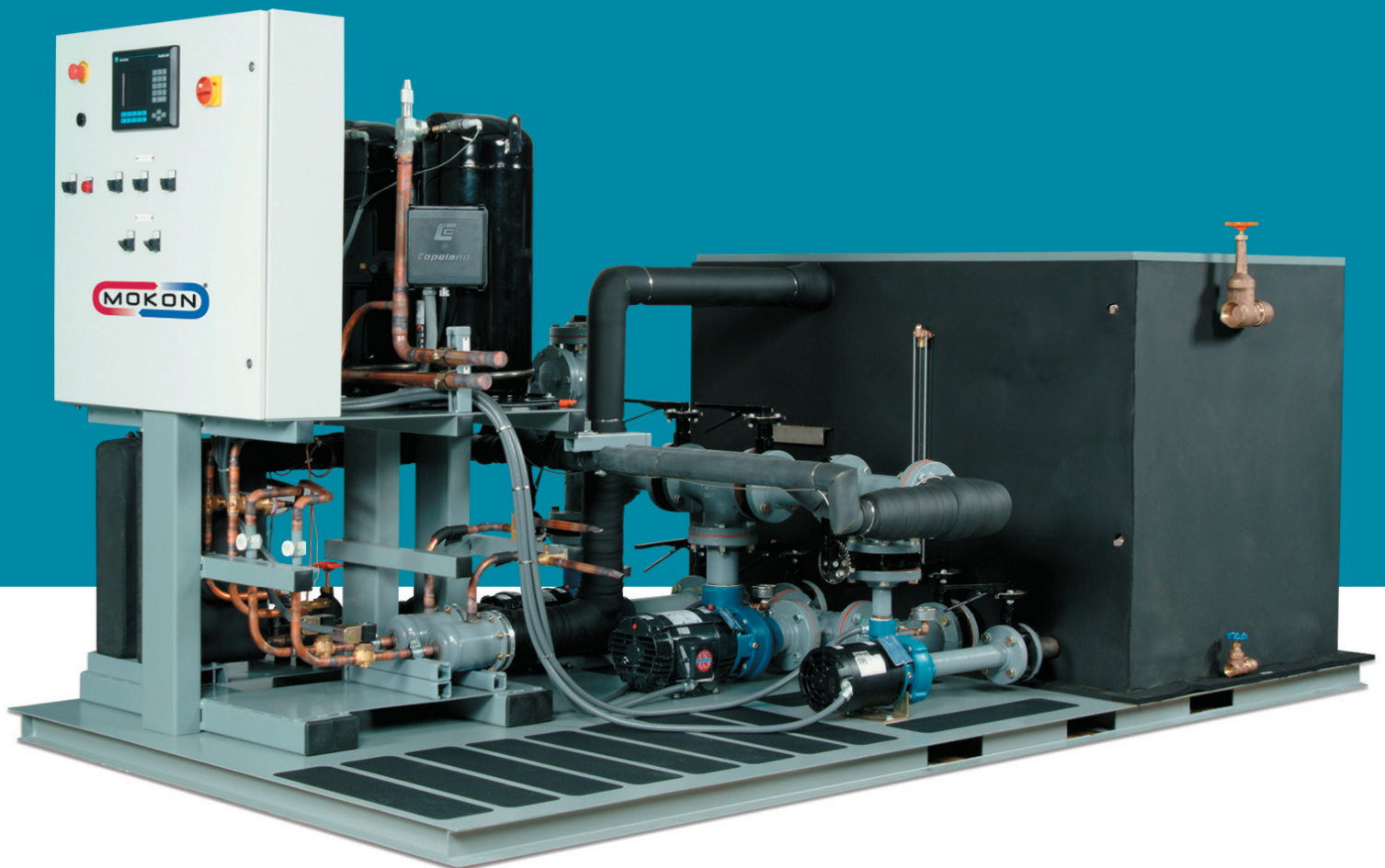




Designed to Perform. Built to Last.

# CENTRAL CHILLERS AND PUMP TANKS



**Setting the standard for high performance and superior quality thermal fluid solutions for over 65 years.**

# Central Chiller Systems

Leave it to Mokon to offer Central Chiller systems with all the benefits you're looking for. Central Chillers are available in 30 to 120 Ton cooling capacities, air- or water-cooled condensing, and scroll compressors. Our dependable, energy-efficient systems are your source for continuous centralized process cooling down to 20°F (-7°C).



## Maximum Safety and Reliability

- Flow switch to protect from process blockage and no flow condition
- NEMA 12 rated electrical enclosure
- Low and high refrigerant pressure safety devices
- Main power disconnect
- General fault and individual system alarms including freezestat, compressor fault and no flow condition
- Emergency stop allows quick emergency shutdown
- Audible alarm for fast notification of problems with reset
- UL 508A approved electrical panel

## Low Maintenance

- Refrigeration shut-off valve isolates refrigerant for regular service
- Refrigeration liquid line solenoid valves keep refrigerant from backing up into compressor during shutdown
- Digital freezestat protection provides safety for low fluid temperatures
- Pressure transducers eliminate gauges and switches

## Controls

Advanced programmable microprocessor-based controller designed specifically for chiller applications. The controller provides compressor lead lag, built-in delay, safety functions and much more. The controllers are compact yet extremely accurate and powerful.

## Remote Chiller Condensers

Mokon offers remote condenser options providing the benefit of moving both the heat and sound generated outdoors and not affecting your HVAC system or increasing the noise level in your facility.

## Product Testing and Warranty

All Mokon central chiller and pump tank systems are qualified for service by rigid, simulated field tests, and are 100% factory calibrated and run tested. Mokon offers a 1 year warranty on system.

## Accurate, Reliable and Green Friendly

- Single or dual circuit configurations with scroll compressors
- Automatic compressor staging for capacity control
- Electronic hot gas bypass for partial load conditions
- Brazed plate evaporators
- Environmentally friendly refrigerants

## Optional Items

- Low temperature ambient air kit for operating below 40°F (4°C) outdoor ambient air temperatures
- Evaporator strainers, manifold and isolation valves
- Water-cooled condenser, strainers, manifold and isolation valves
- Visual alarms

## Customer Service You Can Count On

Backed by one of the most experienced customer service teams in the industry, Mokon offers full customer support so that you can have access to our expertise before, during and after the sale. Our service capabilities include:

- 24-hour customer support right over the phone
- Installation and start-up assistance available
- Customer training capabilities on all product lines
- Complete factory repair and refurbishment service on all Mokon systems
- Conversions, including reconditioning/remanufactured service from Mokon – system will be updated, tested and calibrated and leave Mokon with an extended warranty

# Pump Tank Systems

Mokon's line of Pump Tanks reinforces our reputation as a manufacturer of quality and durable thermal fluid systems. Our engineers design each Pump Tank system to meet your specifications, and each system can be easily integrated with a central process water chiller, cooling tower or your existing water system.



## Efficient Design

- Single or multiple pump configurations
- High-efficiency, close-coupled, nonoverloading centrifugal pumps for optimal flow and pressure
- Pump suction and discharge piping trim, eliminating excessive pressure drop
- Tanks provided with insulation

## Maximum Safety and Reliability

- NEMA 12 rated electrical enclosure
- Sight glass with safety rods
- Fill, overflow and drain connections
- Low pressure and low level safety shutoff switches
- Reinforced steel structure deck adds rigidity and increased safety
- Anti-skid base coating
- UL 508A approved electrical panel

## Low Maintenance

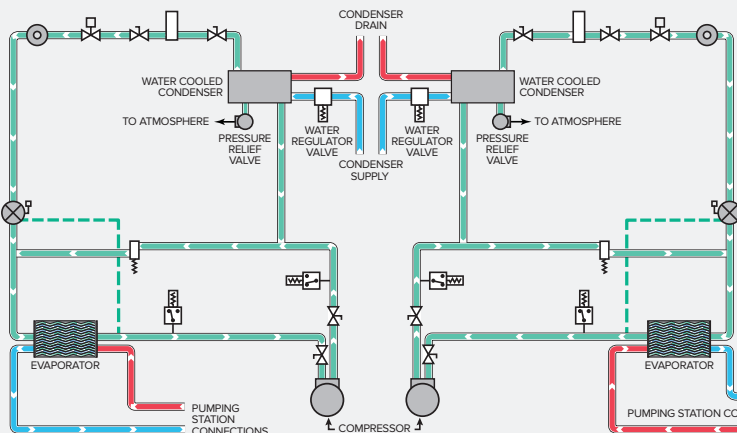
- Stainless steel or epoxy-coated steel tank construction
- Suction valve allows pump to be changed without draining the tank
- Multiple pump sets are equipped with suction manifolds for ease of installation
- Tank covers provided to prevent contamination and evaporation

## Optional Items

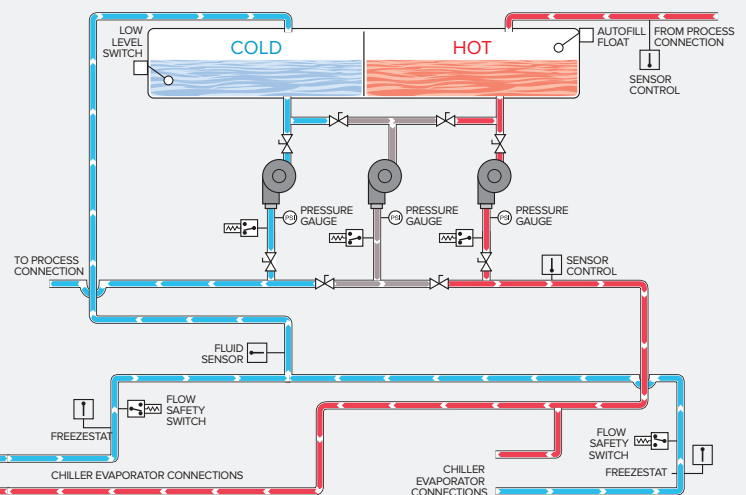
- Microprocessor or PLC controllers
- NEMA 3, 4, 4X and 7 rated electrical enclosures and components
- Discharge check valves to prevent supply line from flow back
- Automatic fill, low water level (reservoir) indication and system shutdown, and water make-up valves
- High temperature and low flow alarms
- Full-sized standby pump acts as backup to process and recirculation pumps
- Cooling tower control available for single point interface
- Visual alarms

## How These Systems Can Work Together:

### Dual Circuit Water Cooled



### Central Chiller Pumping Station





# Additional Process Control Solutions from Mokon

## Portable and Outdoor Chiller Systems

- Air-cooled or water-cooled condensing
- Scroll and reciprocating compressors
- Single, dual circuit and modulating designs
- Indoor and outdoor designs with remote condenser options
- Combination heating and chilling systems



## Cold Climate Coolers

- Cost-effective free cooling solution
- Closed loop system – no make-up water or expensive chemical additives
- Up to 120 Ton cooling capacities
- Environmentally friendly design reduces water and energy costs
- Weather resistant construction



## Water Temperature Control Systems

- Process heating requirements up to 380°F (193°C)
- Single, dual, and multi-zone configurations
- Positive or negative pressure flow
- Heat remover designs available
- NEMA/Type 1, 4, 4X, 7, 12 designs available



## Oil Heat Transfer Fluid Temperature Control Systems

- Process heating requirements up to 700°F (371°C)
- Single, dual and triple zone configurations
- Portable and stationary designs
- Combination heating and chilling systems
- NEMA/Type 1, 4, 4X, 7, 12 designs available



## Custom Engineered Systems

- Custom designs ranging from -20°F to 700°F (-29°C to 371°C)
- Portable, stationary and packaged process skid systems
- Copper, steel, stainless steel, and other materials of construction
- Cleanroom, wash down, outdoor, and hazardous rated designs
- UL, CE, CSA, EAC, RAC, NFPA, NEMA and ASME certifications



## Fluids, Cleaners and Maintenance Products

- Heat transfer fluids from -40°F to 600°F (-40°C to 315°C)
- Cleaner fluids up to 550°F (288°C)
- Filtration and descaling systems
- Negative pressure systems
- Manifolds and custom valving packages



Designed to Perform. Built to Last.

2150 Elmwood Avenue  
Buffalo, New York 14207

P (716) 876-9951  
F (716) 874-8048  
E sales@mokon.com

[mokon.com](http://mokon.com)



Technical data shown is subject to change without notice. The company will endeavor to supply the equipment as illustrated but reserves the right to make dimensional and other design changes as required.